

Feb 1, 2004
No. 81

TOYO TIRE & RUBBER CO., LTD.
Tire Overseas Operations Division
2-17-22 Takada, Toshima-ku, Tokyo 171-8544, Japan
Telephone: Tokyo (03) 5955-1211•1215•1216•1285
Facsimile : Tokyo (03) 5955-1253
TOYO Global Web Site: www.toyojapan.com

TOYO PROXES 4

New generation All-season UHP for a wide variety of contemporary sedans and coupes



Product Concept

Toyo PROXES 4, New generation All-season UHP radial meets the increasing demand of affordable All-season performance with stylish and attractive tread and sidewall design.

Covering 35, 40, 45, 50 and 55 series with V and W speed-rate, Proxes4 offers wide selection in plus-sizing applications for a wide variety of contemporary sedans and coupes.

In order to achieve excellent dry and wet handling performance, "T-mode", Toyo's new advanced tire design technology has been successfully applied for its development.

Features and Benefits

Improved Dry Performance

Optimized shoulder and mediate block distribution and a stable curving center rib provide excellent cornering performance and directional stability in dry condition.

Excellent Wet Performance (UTQG TRACTION GRADE : AA)

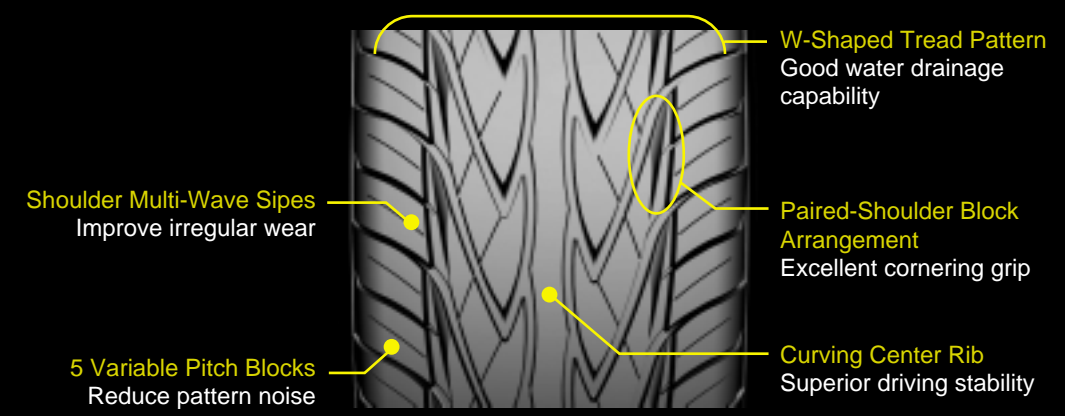
Unique W-shape tread design with diagonal grooves effectively disperse water on wet surface, while special tire compound provides firm contact grip resulting in excellent wet performance, without sacrificing the tire wear.

Low Noise

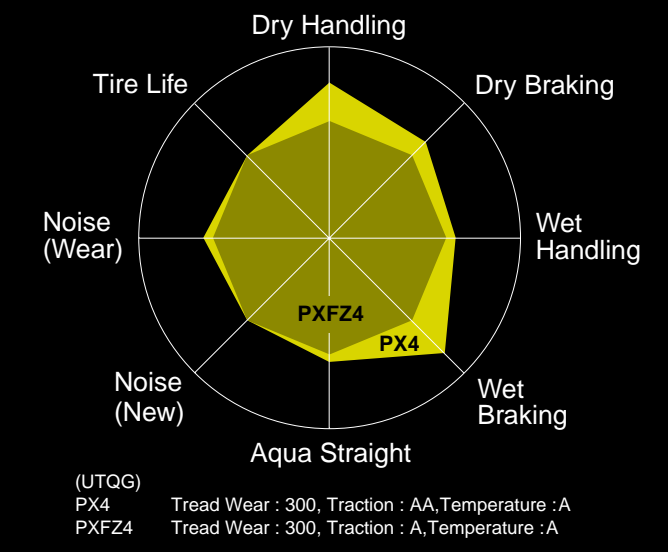
Five variable pitch pattern and optimized sipe distribution minimize noise generation, contributing to quiet and comfortable ride.

PROXES 4

PROXES 4 Tread Design New functional tread design

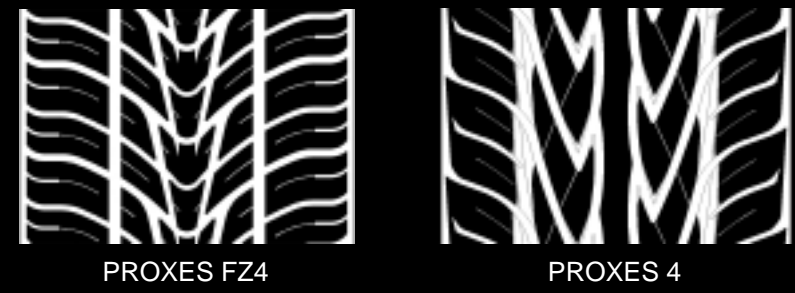


PROXES 4 vs. PROXES FZ4 Performance Comparison



Improvement in Wet and Dry Performance

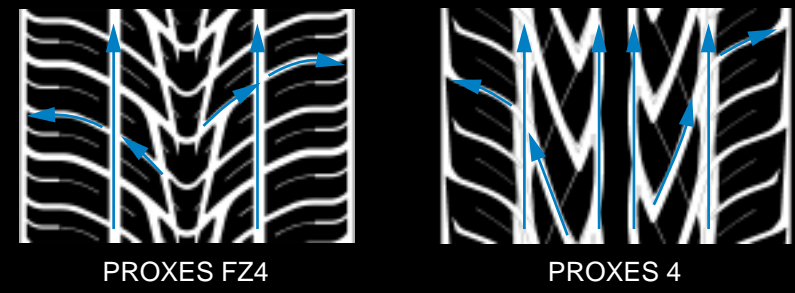
Improvement Dry Performance → Optimized Pattern Block Shape



Larger pattern block + Decrease number of sipe = Increase stiffness pattern block

Improved dry handling & braking performance

Improvement Wet Performance → Optimized Pattern Design



High angle groove

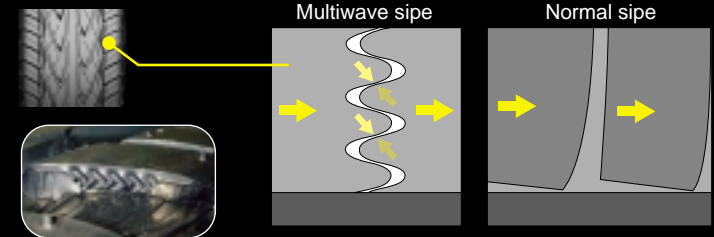
Improved drainage in the direction of going

Improved wet braking & aquaplaning performance

Improvement Wet and Dry Performance → Adopted Silica Compound

Improvement in Noise

Adopted Multiwave Sipe → Keep Stiffness of Shoulder Block

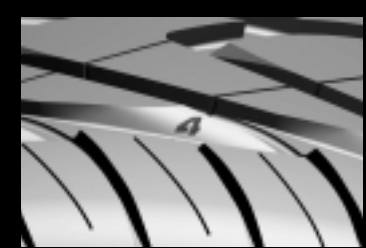


Multiwave sipe works as follows :
 When the force is exerted on the tread blocks in driving or braking, tread blocks is supported by sipe wall, which reduce deformation of the tread blocks.

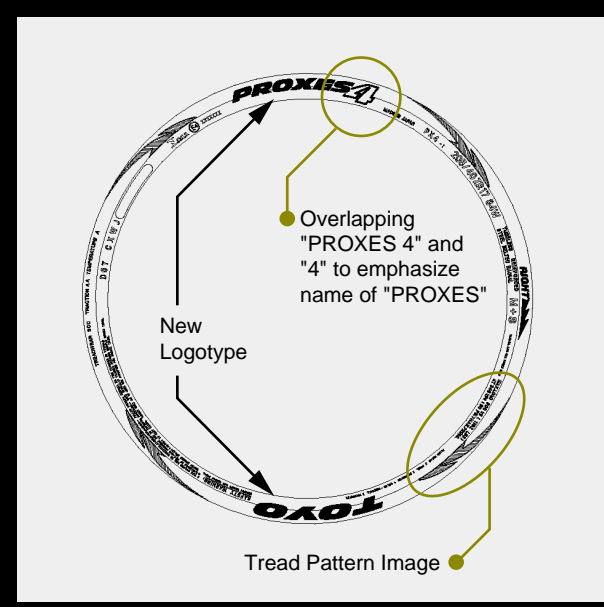
Keep stiffness of block

Improved toe and heel wear → Reduce noise (after running)

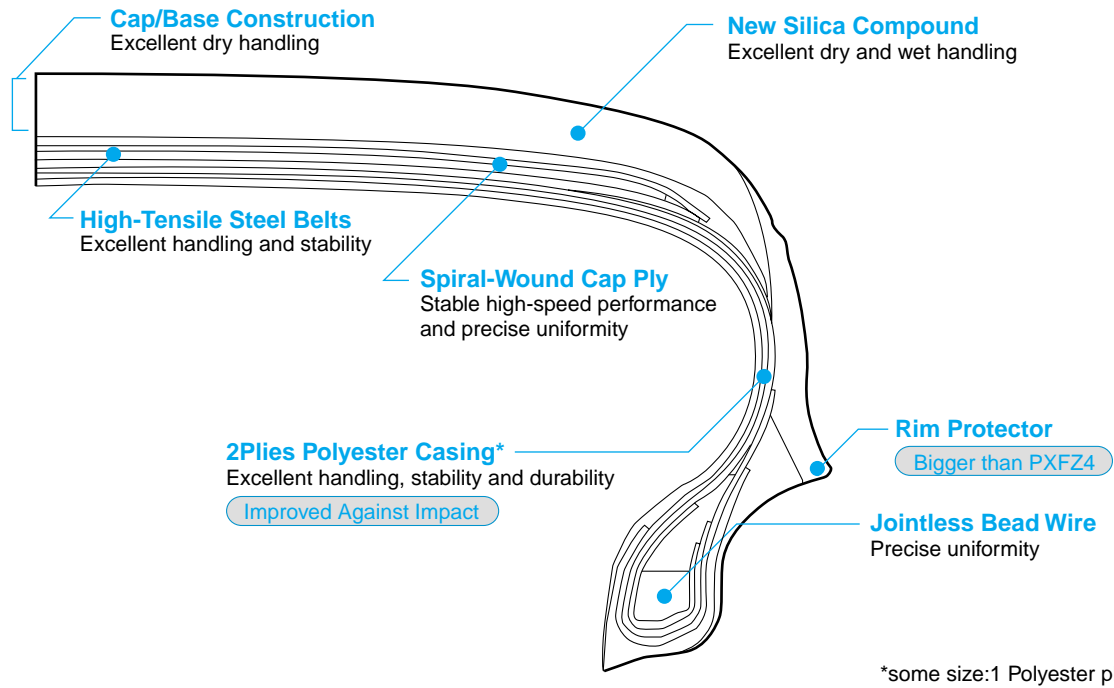
PROXES 4 Side Design and PROXES 4 Side View



Unique Logo "4" of PROXES 4 is on tread block seven locations (Circumference)



Construction of PROXES 4



Available Sizes and Specifications of the PROXES 4

TIRE SIZE	LOAD INDEX SPEED SYMBOL	TREAD DEPTH (mm)	INFLATED DIMENSIONS		LOADED DIMENSIONS			REVOLUTION PER MILE	ROLLING CIRCUMFERENCE (mm)	STANDARD RIM (inch)	ALTERNATE RIM (inch)
			OVERALL DIAM. (mm)	OVERALL WIDTH (mm)	STATIC RADIUS (mm)	STATIC WIDTH (mm)	DYNAMIC RADIUS (mm)				
215/35ZR18	Reinforced 84W	7.8	610	218	288	238	296	865	1861	7.5	7.0-8.5
215/35ZR19	Reinforced 85W	7.8	632	218	300	238	307	835	1928	7.5	7.0-8.5
225/35ZR19	Reinforced 88W	7.9	640	226	303	246	311	824	1952	8.0	7.5-9.0
235/35ZR19	Reinforced 91W	8.0	649	240	306	262	315	813	1979	8.5	8.0-9.5
245/35ZR19	Reinforced 93W	8.1	654	248	308	270	317	807	1995	8.5	8.0-9.5
245/35ZR20	Reinforced 95W	8.1	680	244	321	266	330	776	2073	8.5	8.0-9.5
255/35ZR20	Reinforced 97W	8.2	687	258	324	281	333	768	2094	9.0	8.5-10.0
205/40ZR16	Reinforced 83W	7.7	571	218	267	238	277	924	1742	7.5	7.0-8.0
205/40ZR17	Reinforced 84W	7.7	598	218	281	238	290	882	1824	7.5	7.0-8.0
215/40ZR17	Reinforced 87W	7.8	607	225	284	245	295	869	1851	7.5	7.0-8.5
255/40ZR17	Reinforced 98W	8.2	636	261	296	284	309	830	1940	9.0	8.5-10.0
205/40ZR18	Reinforced 86W	7.7	623	218	293	238	302	847	1900	7.5	7.0-8.0
215/40ZR18	Reinforced 89W	7.8	629	221	296	241	305	839	1918	7.5	7.0-8.5
225/40ZR18	Reinforced 92W	7.9	638	230	299	251	310	827	1946	8.0	7.5-9.0
235/40ZR18	Reinforced 95W	8.0	644	243	301	265	313	819	1964	8.5	8.0-9.5
245/40ZR18	Reinforced 97W	8.1	653	248	305	270	317	808	1992	8.5	8.0-9.5
205/45ZR16	Reinforced 87W	7.7	593	211	276	230	288	890	1809	7.0	6.5-7.5
205/45ZR17	Reinforced 88W	7.7	619	211	289	230	300	852	1888	7.0	6.5-7.5
215/45ZR17	Reinforced 91W	7.8	629	214	293	233	305	839	1918	7.0	7.0-8.0
225/45ZR17	Reinforced 94W	7.9	637	226	296	246	309	828	1943	7.5	7.0-8.5
235/45ZR17	Reinforced 97W	8.0	644	239	299	261	313	819	1964	8.0	7.5-9.0
245/45ZR17	Reinforced 99W	8.1	653	249	302	271	317	808	1992	8.0	7.5-9.0
195/50R15	Reinforced 86V	7.6	579	196	268	214	281	911	1766	6.0	5.5-7.0
205/50R15	Reinforced 89V	7.7	586	212	270	231	284	900	1787	6.5	5.5-7.5
225/50R15	Reinforced 95V	7.9	607	230	279	251	295	869	1851	7.0	6.0-8.0
195/50R16	Reinforced 88V	7.6	605	198	281	216	294	872	1845	6.0	5.5-7.0
205/50R16	Reinforced 91V	7.7	612	212	283	231	297	862	1867	6.5	5.5-7.5
225/50R16	Reinforced 96V	7.9	632	230	291	251	307	835	1928	7.0	6.0-8.0
245/50R16	97V	8.1	650	248	298	270	316	812	1983	7.5	7.0-8.5
205/55R15	88V	7.7	608	212	279	231	295	868	1854	6.5	5.5-7.5
205/55R16	Reinforced 94V	7.7	634	214	292	233	308	832	1934	6.5	5.5-7.5
215/55R16	Reinforced 97V	7.8	645	223	296	243	313	818	1967	7.0	6.0-7.5
225/55R16	Reinforced 99V	7.9	653	234	299	255	317	808	1992	7.0	6.0-8.0

NOTE: All product specifications subject to change without notice